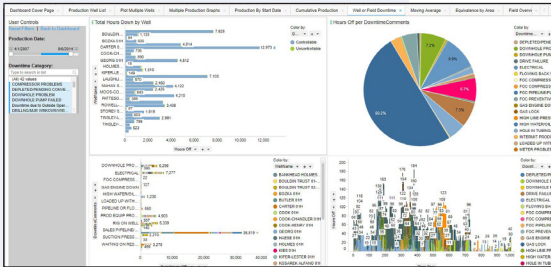


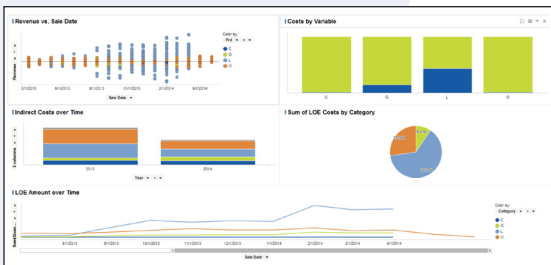


## ON PREMISE SPOTFIRE TRAINING

### BR-DC- DASHBOARD CREATION



Starter Dashboard:  
Meeting Analytics Template



Starter Dashboard:  
LOE Template

#### Overview:

The Dashboard Creation Class is a guided On Premise training that walks students through the process of creating a usable practical tool in one 8 hour session. Students will start with a simple Blue River dashboard template and learn how to apply their data to the standard visuals and work with the instructor to create more and more specific visuals for their personal use case. Course can delivered in two different methods or tracks:

#### Class Track:

A class based approach where ONE general dashboard is created as a class to accomplish a specific task with ONE data set. (Examples: replace report, replace meeting presentation, replace an existing template). Class will work together and individually to recreate visuals with new data to work through the process of creating a dashboard.

#### Individual Track:

A individual based approach where each student will create their own dashboard. Data must be wrangled and confirmed to correct prior to class day. Class will work together to import or link data, create basic visualizations and then the remaining time will be used to work on dashboards with instructor in a workshop setting.

Skills and Applied Spotfire Visualizations: (dependent on specific use)

- |                   |                    |
|-------------------|--------------------|
| Data Tables       | Color By Controls  |
| Text Areas        | Pie Charts         |
| Line Charts       | Scatter Plots      |
| User Controls     | Combination Charts |
| Filtering         | Waterfall Chart    |
| Selection of Data | Map Chart          |
| Scale Sliders     | Scatter Plot       |



## ON PREMISE SPOTFIRE TRAINING

### BR-DC- DASHBOARD CREATION

#### Lessons:

1. Overview of class purpose and goals for the dashboard. Quickly review basic skills of the dashboard.
2. Loading Data and Building Visualizations: (Track Dependent)
  - Class:
    - Review dashboard template and basic visualizations.
    - Follow along with instructor as data is loaded and visualizations are built.
  - Individual:
    - Review of dashboard template and basic visualizations
    - Workshop to load / link data for each dashboard
    - Follow along with instructor to build basic visualizations
3. Workshop:
  - Class:
    - Add additional visualizations and review logic behind use and functionality to empower students to recreate methods on future projects. Allow for personalization of dashboards as time allows.
  - Individual:
    - Workshop individually to add additional visualizations and review logic behind use and functionality to empower students to recreate methods on future projects.